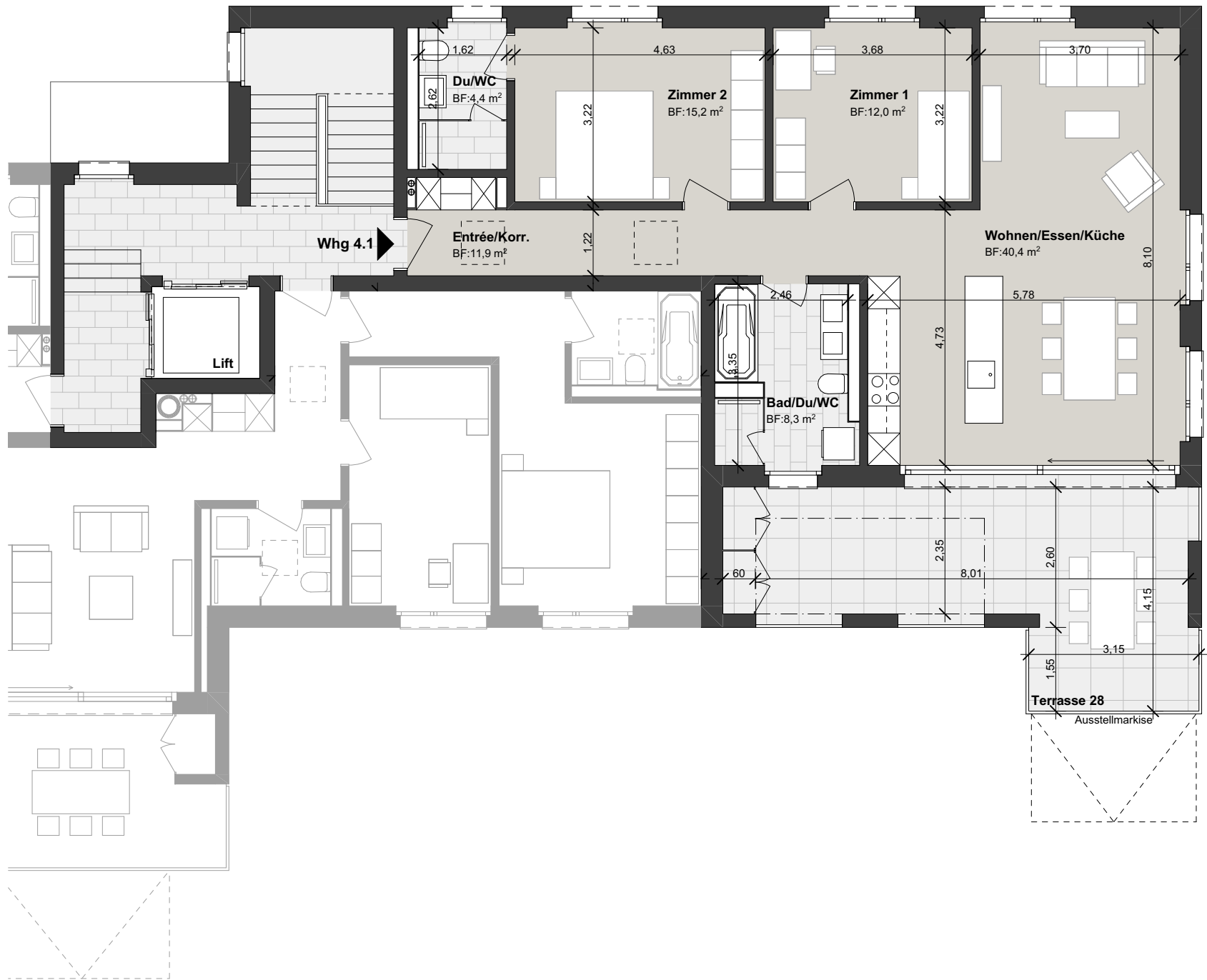
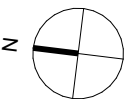
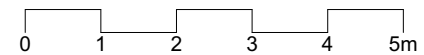


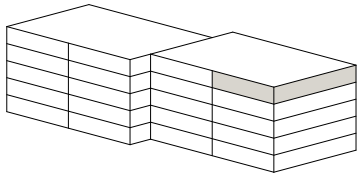
Anzahl Zimmer	3.5
Bruttowohnfläche	97.00 m ²
Hauptnutzfläche	92.20 m ²
Aussenbereich	28.00 m ²
Keller	10.00 m ²



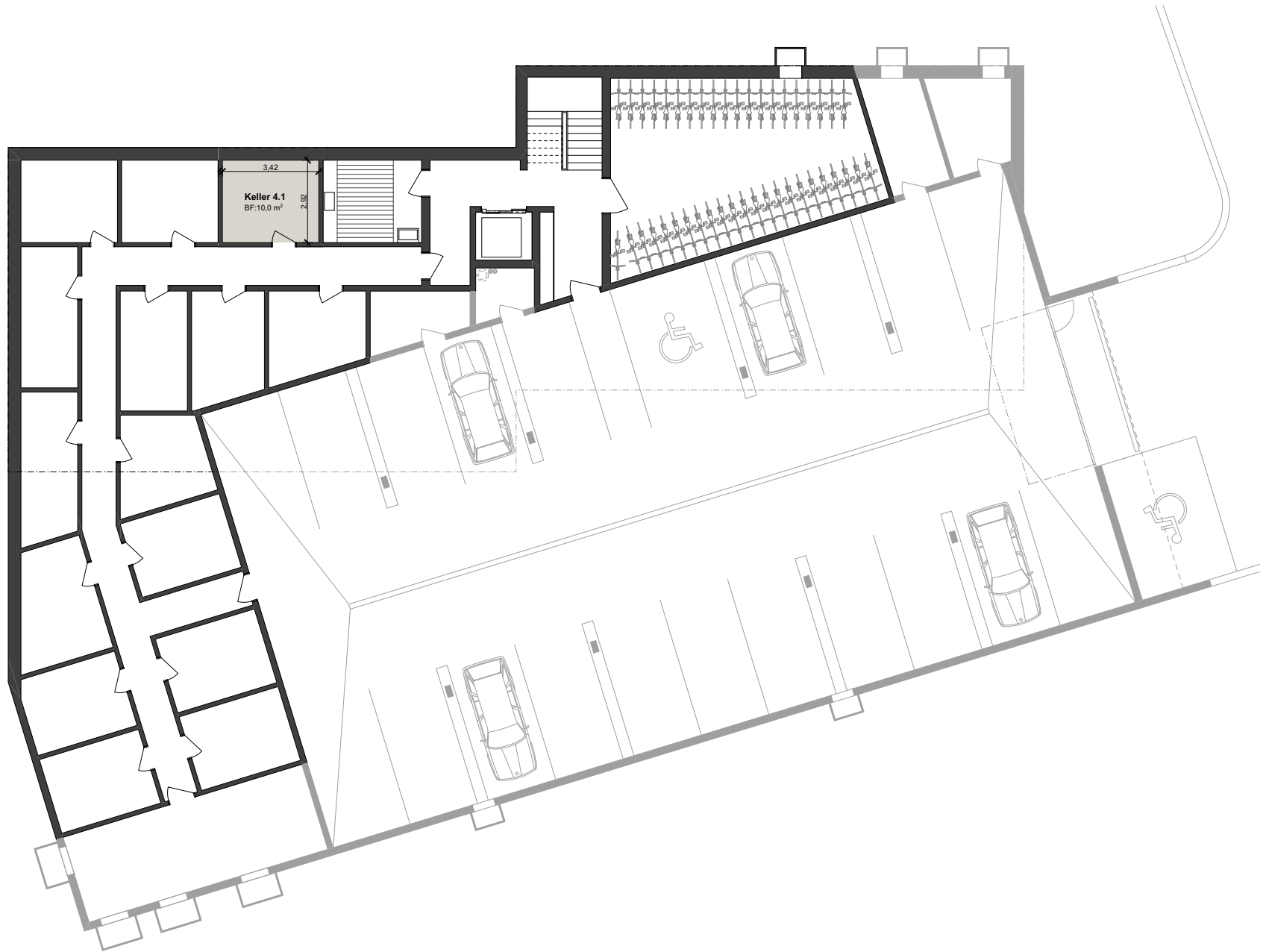
Neubau MFH
Kräzernstrasse 82
9000 St. Gallen

Wohnung 4.1 4.OG 1:100





Anzahl Zimmer	3.5
Bruttowohnfläche	97.00 m ²
Hauptnutzfläche	92.20 m ²
Aussenbereich	28.00 m ²
Keller	10.00 m ²



Neubau MFH
Kräzernstrasse 82
9000 St. Gallen

Keller zu Wohnung 4.1 UG 1:200

